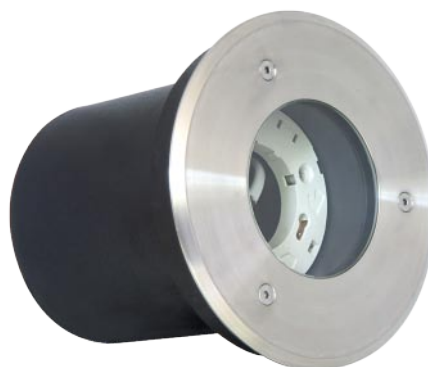


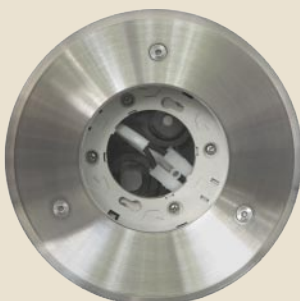
GX53 ground lamp inset, walk-over

Description

The walk-over GX53 ground lamp is perfect for illuminating your driveway or paths. Through the use of energy-saving or LED lamps you can create an impressive lighting of your property or your garden and save energy at the same time.



Images



| | |
|-----------------------|---------------|
| Ref. | 46207 |
| EAN | 4043619462070 |
| Country of origin | China |
| Customs tariff number | 85414010 |

Specification

- GX53 ground lamp hard plastic with stainless steel cover
- Suitable for GX53 energy saving bulbs max. 11W and LED illuminants
- Operating voltage: 220-240V AC 50/60Hz
- To be inset into the ground, walk-over
- Protection class: IP67
- Class II
- Dimensions: Ø 140mm, height 130mm, thickness of steel cover 1.8mm
- Bulb not included in package content

Package content

- GX53 ground lamp
- Allen key

Package

- White Box

