



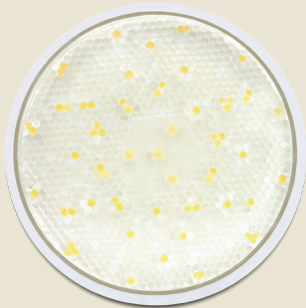
E27 PAR38 LED illuminant 42 x SMD 9.0W warm white cover

Description

This E27 LED bulb PAR38 type can be used with any customary E27 base. It does not only create a pleasant light but also helps you to save the environment as it is more energy-saving than a conventional light.



Images



Ref.	46306
EAN	4043619463060
Country of origin	China
Customs tariff number	85414010

Specification

- Socket: E27
- Type: PAR38 (Ø 12cm) with cover
- 230V AC
- 42 x SMD5050 LED in warm white
- Power consumption: 9.0W
- Current demand: 70mA
- Color temperature: 3150K
- Luminous flux: 480 Lumen
- Beam angle: 120°
- Dimensions: Ø 121.5mm, height 126.5mm

Package Content

- LED E27 bulb

Package

- White box

230
V**9,0**
W**70**
mA