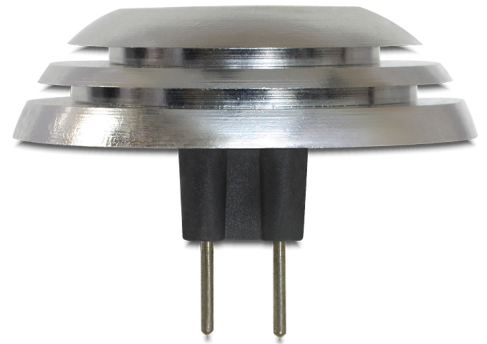


Delock Lighting G4 LED illuminant 0.8 W warm white 1 x 1.5 W COB

Description

G4 bulbs are often used in the kitchen or in the bedroom, e.g. for so-called starlit skies. By simply exchanging your halogen G4 bulbs by energy saving LED G4 bulbs you can save a lot of money and power. The advantage of LED bulbs lies not only in the minor power consumption but also in the minor heat emission.



Item no. 46365

EAN: 4043619463657

Country of origin: CHINA

Package: Retail Box

Technical details

- Socket: G4
- Type: G4
- Operating voltage: 12V DC
- LED Type: 1 x 1,5 W COB
- Nominal power: 0.8 W
- Power consumption during operation: 0.8 W
- Current demand: 70 mA
- Colour temperature: 2850 K
- Light colour: warm white
- Nominal luminous flux: 40 Lumen
- Rated luminous flux: 40 Lumen
- Luminous intensity: 7 Candela
- Beam angle: 170°
- Colour rendering index CRI: Ra 75
- Energy efficiency class: A+
- Weighted energy consumption: 0.85 kWh / 1,000 h
- Electrical power factor: 0.90

- Comparable incandescent bulb power: 5 W
- Nominal life span: 25,000 hours
- Rated life span: 25,000 hours
- Switching cycles: 26,000 x
- Remaining brightness at end of life span: 12 Lumen
- Start-up time (to 60%): 0.2 second(s)
- Ignition time: 0.1 second(s)
- Luminous efficiency: 50.0 Lumen / Watt
- Dimensions (Ø / Length): 25 x 18 mm
- Hydrargyrum (mercury) content: 0.0 mg
- Dimmable: No
- Protection class: IP 20

System requirements

- Please regard the required base load of your transformer!

Package content

- LED G4 bulb

Images

